

Silver reading

Deadly Animals and Creatures

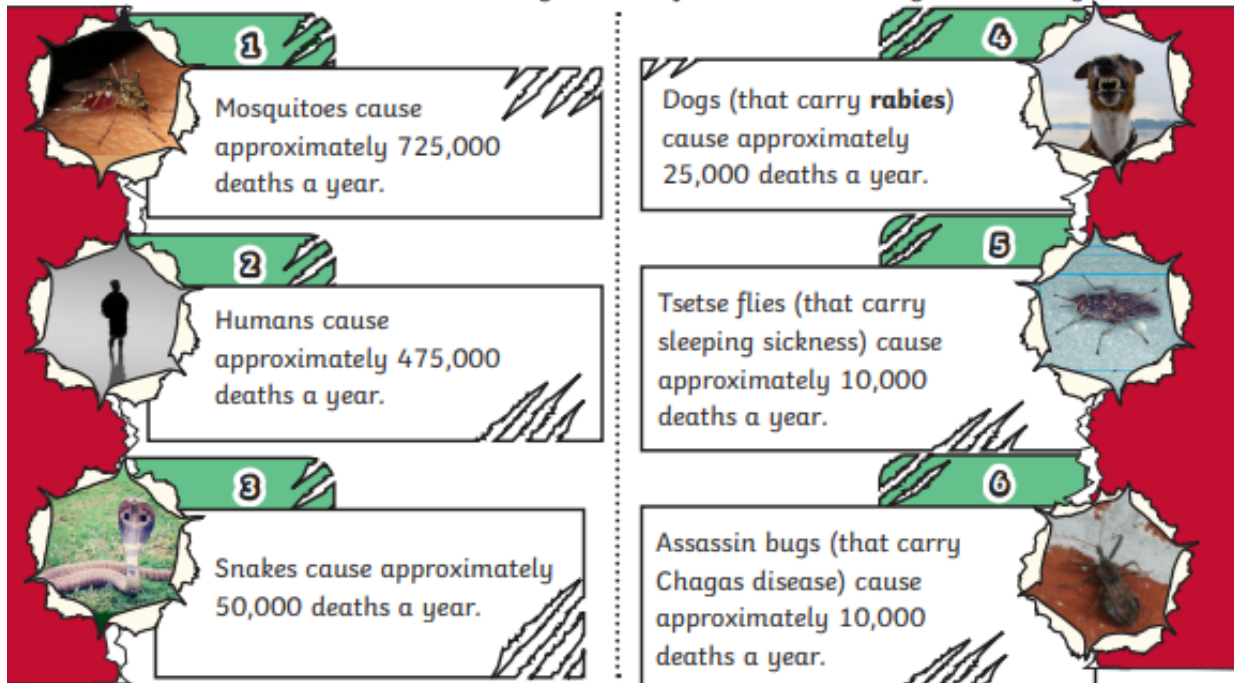
Humans are one of the deadliest animals on the planet. They can be harmful to each other, animals and the planet.

Which Are the Deadliest to Humans?

Mosquitoes cause the most human deaths every year. They are the smallest and the deadliest creature on Earth. Mosquitoes carry dangerous viruses and parasites, such as malaria, yellow fever and dengue fever. Not all snakes are dangerous but more than 450 species are venomous. Snakebites are often not reported but it is estimated that between 420,000 and 1.8 million snakebites happen each year. Dog bites cause over 90% of rabies infections in humans. Tsetse flies are also called tik-tik flies and spread the tropical disease called sleeping sickness.

Big Facts!

According to Bill Gates's 'World's Deadliest Animals list', published in 2014, these are the deadliest animals, ranked by number of human deaths they cause each year:





7

Freshwater snails cause approximately 10,000 deaths a year.



8

Ascaris roundworms cause approximately 2500 deaths a year.



9

Tapeworms cause approximately 2000 deaths a year.



10

Crocodiles cause approximately 1000 deaths a year.



11

Hippopotamuses cause approximately 500 deaths a year.

Deadly Animals and Creatures

12

Lions cause approximately 100 deaths a year.

13

Elephants cause approximately 100 deaths a year.

14

Wolves cause approximately 10 deaths a year.

15

Sharks cause approximately 10 deaths a year.

9. Tapeworm. Photo by Mogana Das Murtey and Patchamuthu Ramasamy (commons.wikimedia.org) is licensed under CC BY 3.0.

Where Do These Animals Live?

The biggest number of harmful mosquitoes are found on the continent of Africa.

Deadly snakes are most common in Asia.

Most rabies-related human deaths happen across countries in Asia and Africa.

The UK was declared rabies-free in 1922.

Tsetse flies can be found across countries in Africa.

Glossary

rabies: A dangerous disease that affects dogs and other animals. Rabies can be passed to humans through a bite from an infected animal.

Questions

1. In which continent do Tsetse flies live? Tick one.

- Antarctica
- Africa
- Europe
- Asia

2. Which insect causes the most deaths? Tick one.

- mosquitoes
- bees
- earwigs
- ants

3. How many deaths a year do snakes cause? Tick one.

- 500
- 5000
- 50,000
- 500,000

4. How many species of snake are venomous? Tick one.

- more than 540
- more than 450
- more than 405
- more than 504

5. Fill in the missing words.

They can be _____ to each other, animals and the _____.

6. Look at the section entitled **Where Do These Animals Live?**
Find and copy a word that means the same as 'frequently seen'.

7. Why do you think a tiny mosquito can cause more deaths than a large shark?

8. Explain what you have learnt about deadly animals and creatures in 30 words or fewer.
